



Icaros OneButton Processing Report

Project properties

| | |
|--------------------------------|--|
| Project name | inspire_70_meter |
| Project type | Agriculture |
| Project area | 0.0944 km ² / 0.0364 sq. mile |
| Ground sampling distance (GSD) | 2.80 cm/pixel / 1.10 inch/pixel |
| Sensor type | Standard |
| Camera make | DJI |
| Camera model | FC350 |
| Input spatial reference | WGS 84 |
| Output spatial reference | WGS 84 / UTM zone 18N |
| Project output | Dense GeoTiff Terrain |

Processing results

| | |
|----------------------------------|-------------------------------|
| Processing start time | Jul 14, 2016 3:21:48 PM |
| Processing end time | Jul 14, 2016 3:47:34 PM |
| Total processing time | 00h:25m:46s |
| Processing result | Process completed succesfully |
| Image size (pixels) | 4000 x 3000 |
| Number of images processed | 159 out of 159 images |
| Number of control points | 0 |
| Total number of matched points | 15694 |
| Mean reprojection error (pixels) | 3.9427 |

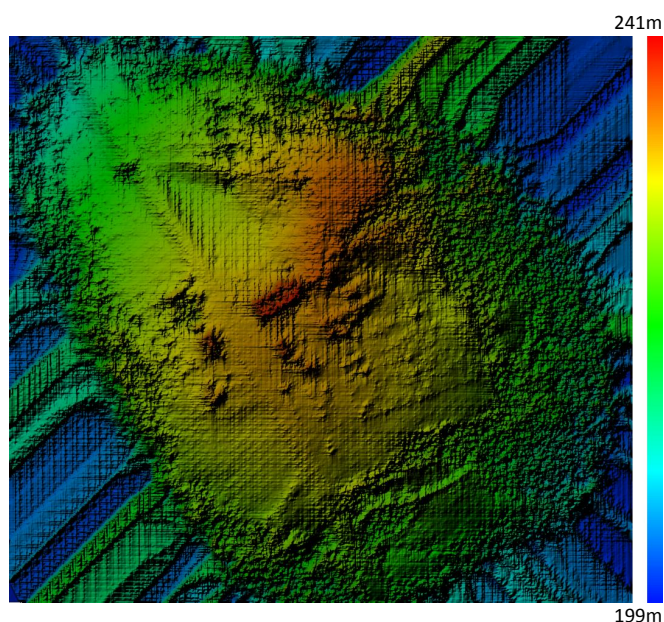
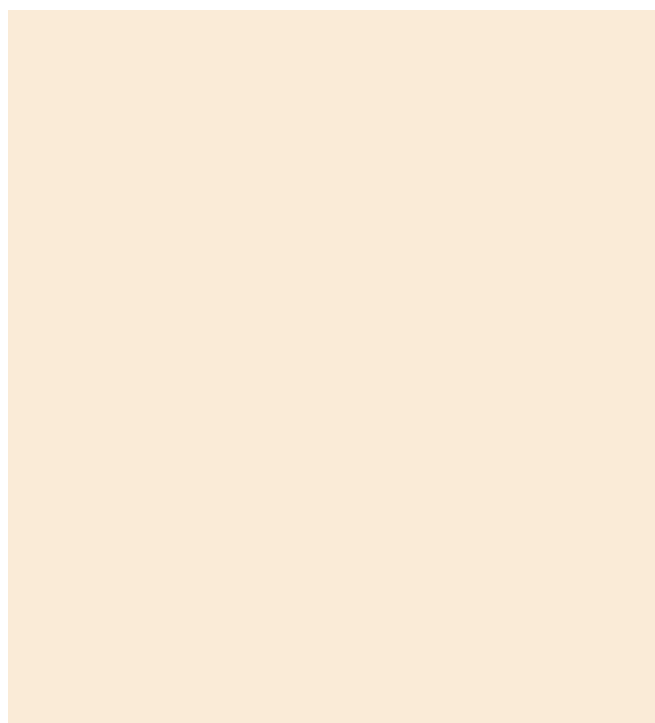


Figure-1 Final Orthomosaic and Terrain Model

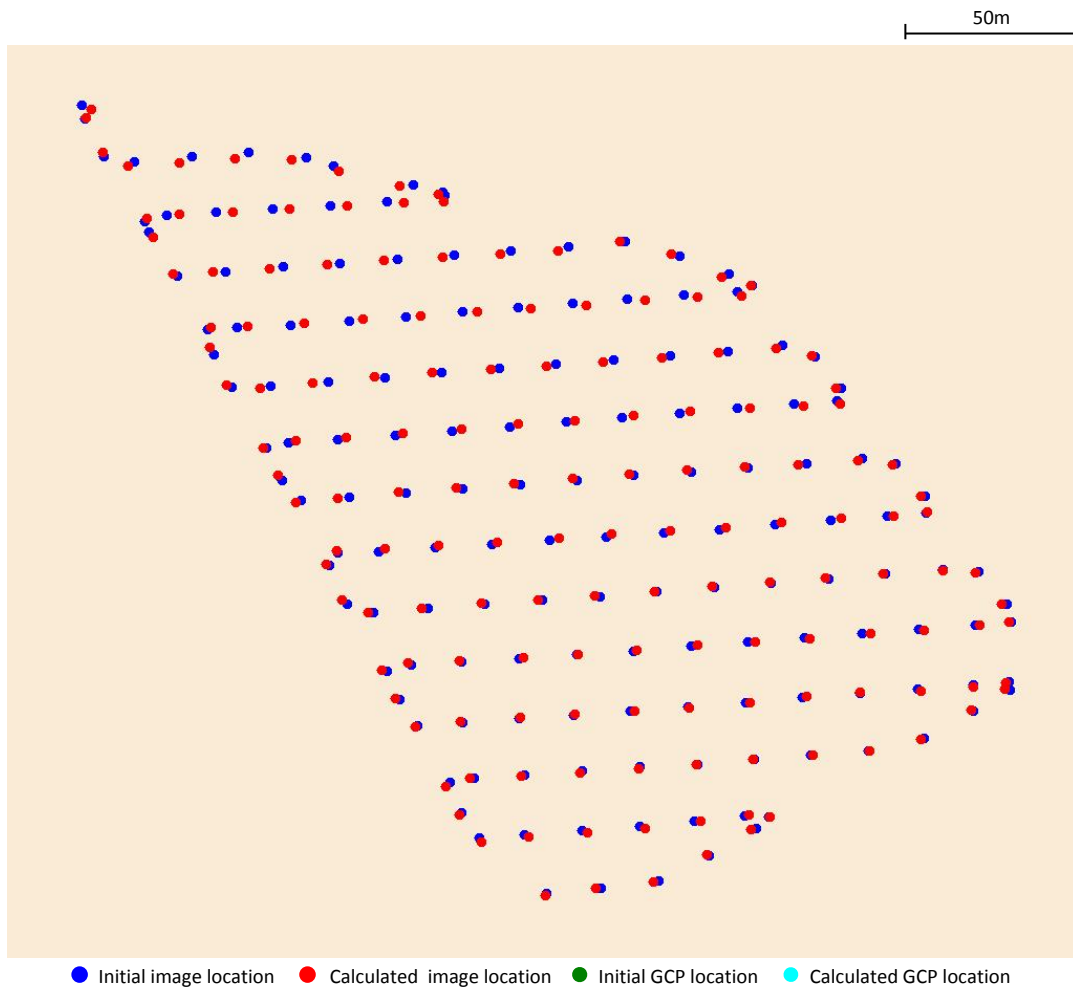


Figure-2 Image Initial and Calculated Locations

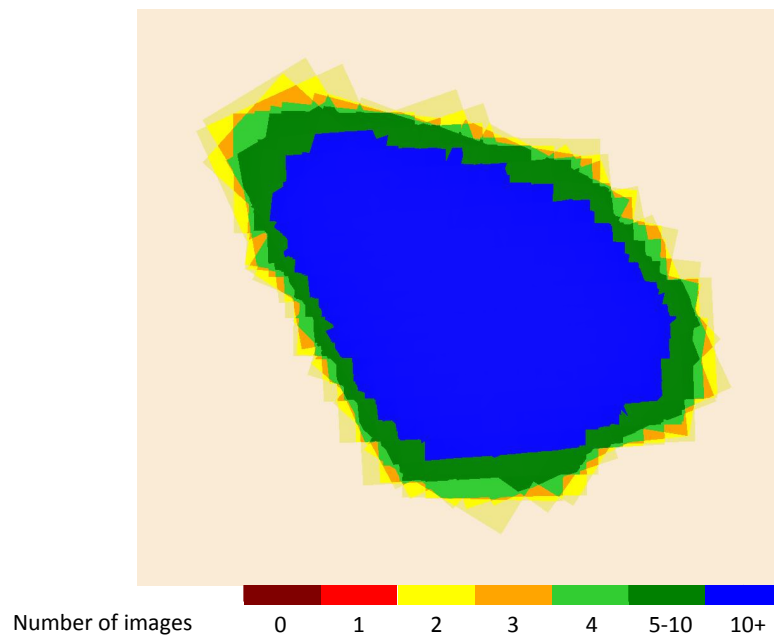


Figure-3 Coverage Map

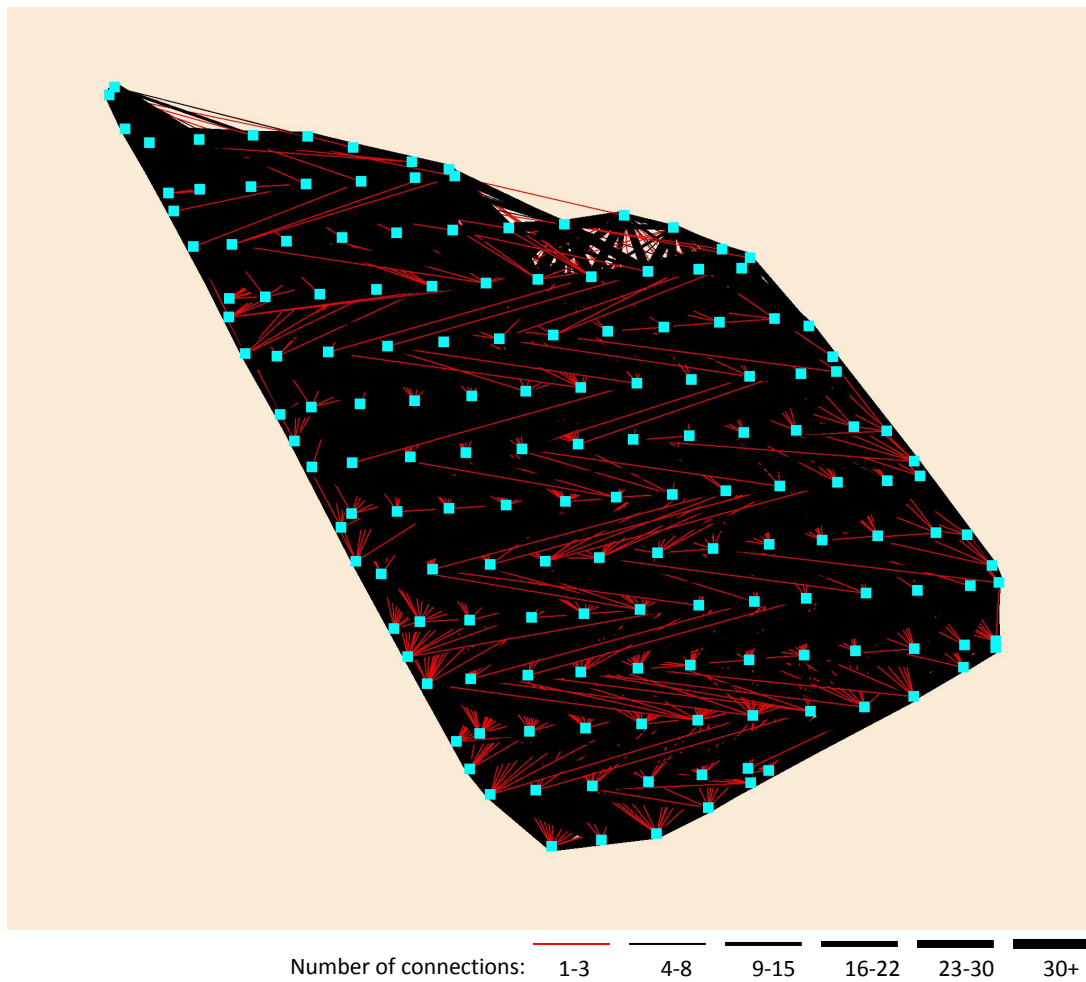


Figure-4 Connection Map

Image pair details

| | |
|------------------------------|--------|
| Total number of connections | 281419 |
| Average connections per pair | 53.97 |
| Median connections per pair | 26 |
| Minimum connections per pair | 1 |
| Maximum connections per pair | 404 |

Matched point details

| | |
|--------------------------|--------|
| Minimum points per image | 106 |
| Maximum points per image | 1081 |
| Median points per image | 519 |
| Average points per image | 538.84 |
| Minimum point residual | 0.00 |
| Maximum point residual | 57.08 |
| Median point residual | 4.59 |
| Average point residual | 5.29 |



Camera calibration details

| | Initial | Final |
|-------------------------------|----------|----------|
| Focal length (mm) | 3.60 | 3.60 |
| Pixel size (mm) | 0.001574 | 0.001574 |
| Principal point offset X (mm) | 0 | 0 |
| Principal point offset Y (mm) | 0 | 0 |
| K0 | 0 | 0 |
| K1 | 0 | 0 |
| K2 | 0 | 0 |
| K3 | 0 | 0 |
| P1 | 0 | 0 |
| P2 | 0 | 0 |
| P3 | 0 | 0 |