



# Icaros OneButton Processing Report

## Project properties

Project name	Phantom_60_meter
Project type	Agriculture
Project area	0.0875 km <sup>2</sup> / 0.0338 sq. mile
Ground sampling distance (GSD)	2.51 cm/pixel / 0.99 inch/pixel
Sensor type	Standard
Camera make	DJI
Camera model	FC300X
Input spatial reference	WGS 84
Output spatial reference	WGS 84 / UTM zone 18N
Project output	Dense GeoTiff Terrain

## Processing results

Processing start time	Jul 14, 2016 2:51:57 PM
Processing end time	Jul 14, 2016 3:10:08 PM
Total processing time	00h:18m:10s
Processing result	Process completed succesfully
Image size (pixels)	4000 x 3000
Number of images processed	147 out of 148 images
Number of control points	0
Total number of matched points	9522
Mean reprojection error (pixels)	1.6933

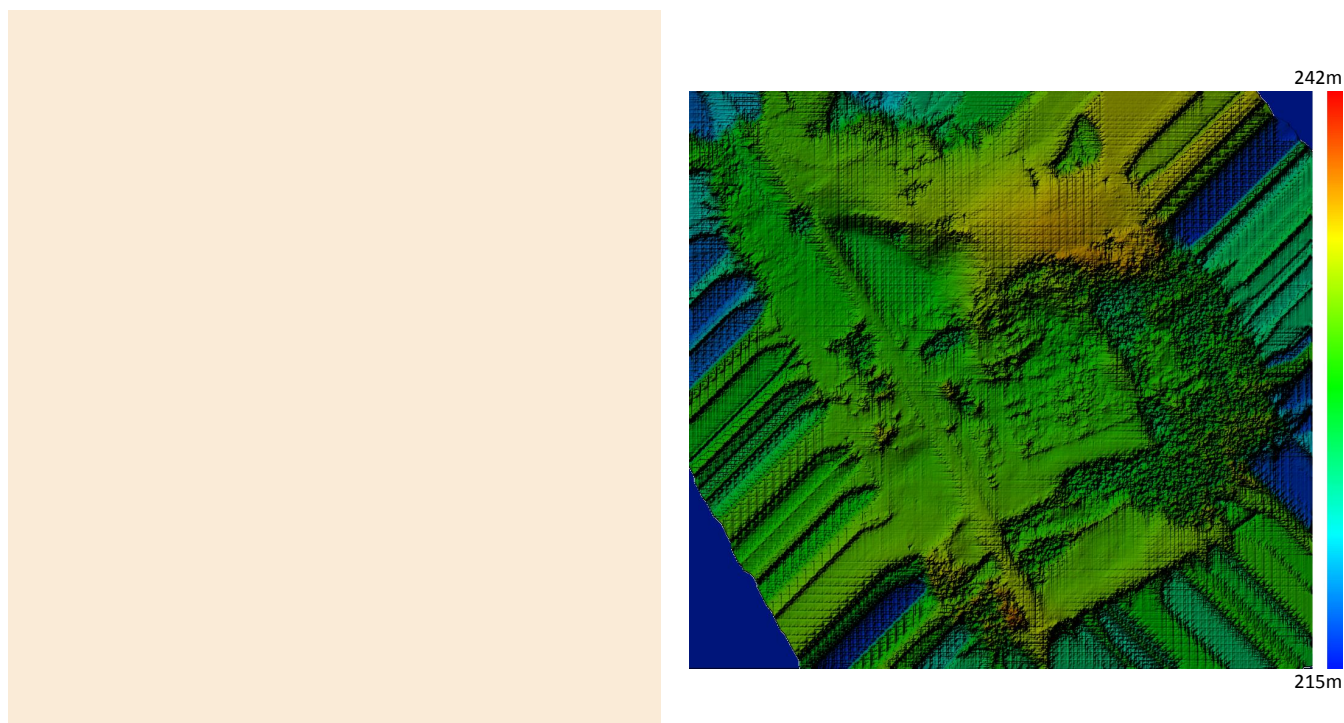
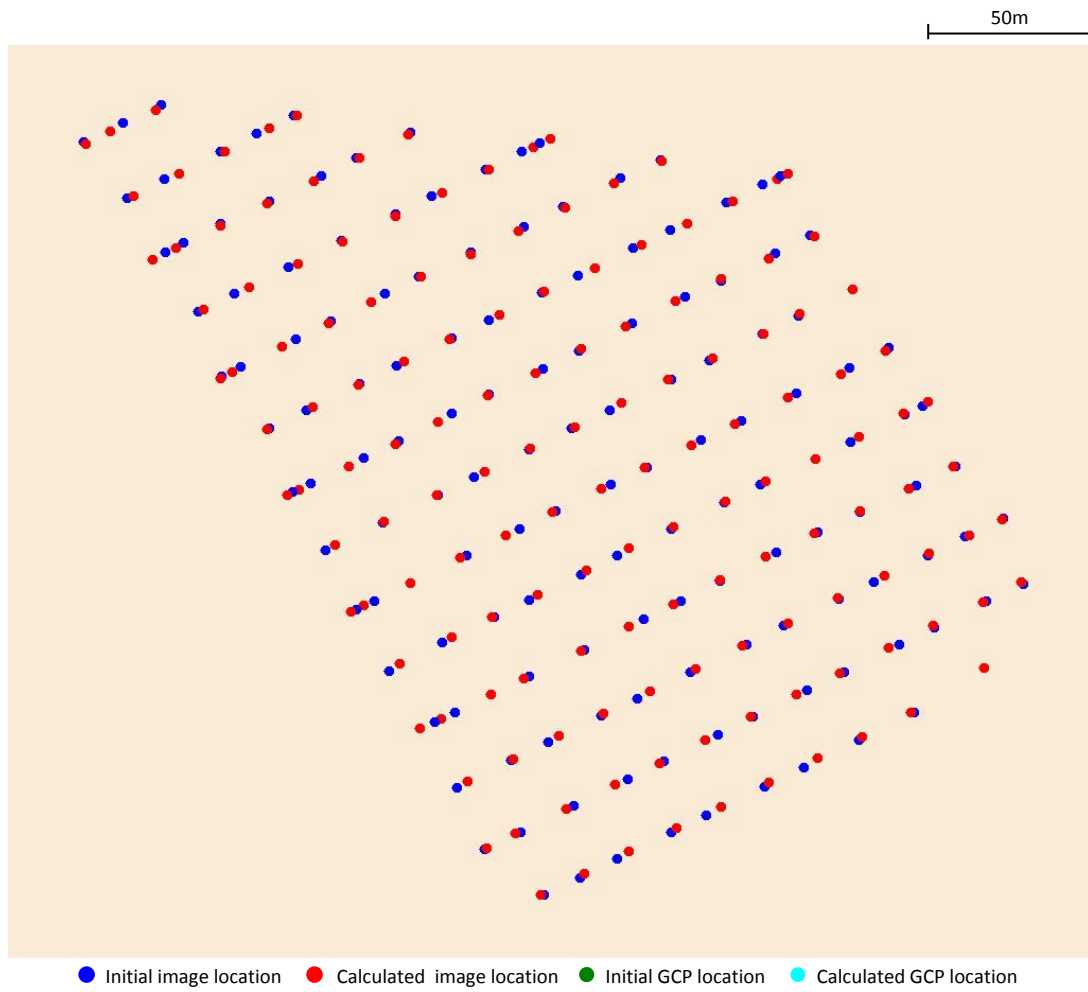
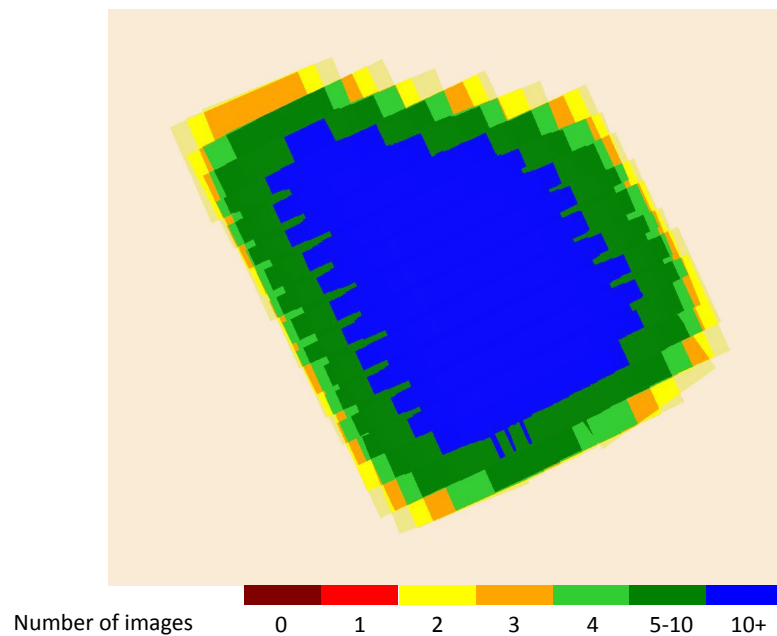


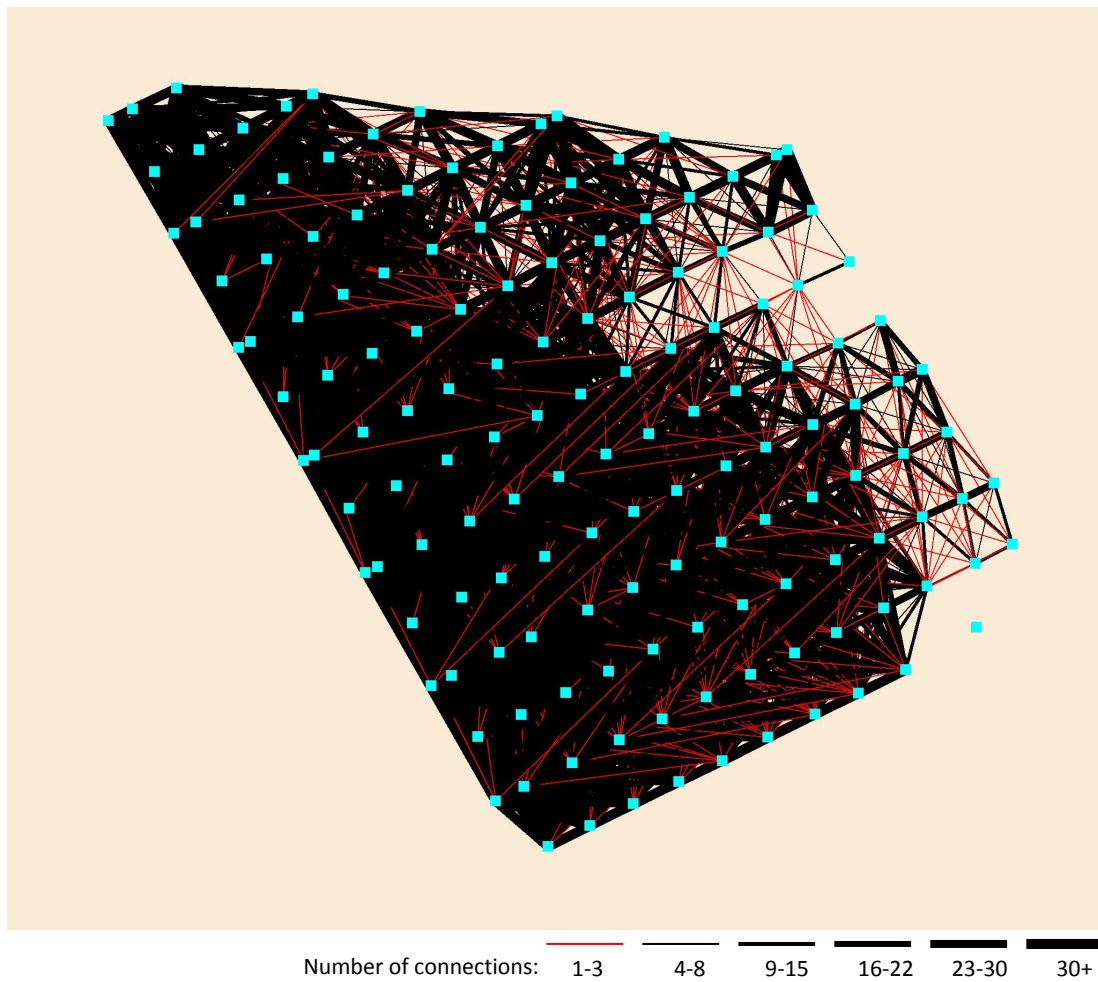
Figure-1 Final Orthomosaic and Terrain Model



**Figure-2 Image Initial and Calculated Locations**



**Figure-3 Coverage Map**



**Figure-4 Connection Map**

#### Image pair details

Total number of connections	139633
Average connections per pair	48.20
Median connections per pair	23
Minimum connections per pair	1
Maximum connections per pair	461

#### Matched point details

Minimum points per image	0
Maximum points per image	889
Median points per image	278
Average points per image	331.21
Minimum point residual	0.00
Maximum point residual	23.53
Median point residual	1.64
Average point residual	1.98

**Camera calibration details**

	<b>Initial</b>	<b>Final</b>
<b>Focal length (mm)</b>	3.60	3.60
<b>Pixel size (mm)</b>	0.00153	0.00153
<b>Principal point offset X (mm)</b>	0	0
<b>Principal point offset Y (mm)</b>	0	0
<b>K0</b>	0	0
<b>K1</b>	0	0
<b>K2</b>	0	0
<b>K3</b>	0	0
<b>P1</b>	0	0
<b>P2</b>	0	0
<b>P3</b>	0	0