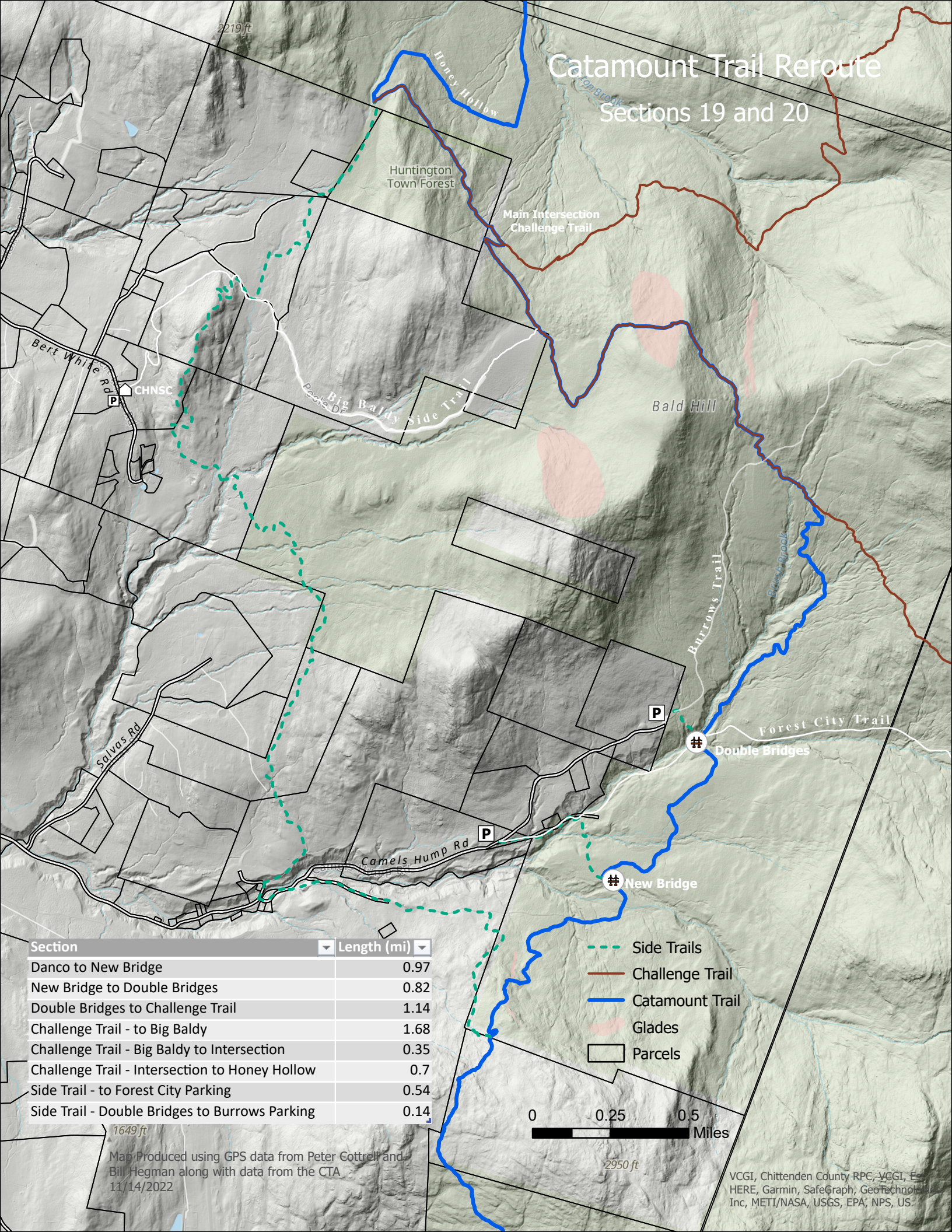


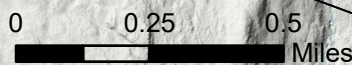
# Catamount Trail Reroute

## Sections 19 and 20



Section	Length (mi)
Danco to New Bridge	0.97
New Bridge to Double Bridges	0.82
Double Bridges to Challenge Trail	1.14
Challenge Trail - to Big Baldy	1.68
Challenge Trail - Big Baldy to Intersection	0.35
Challenge Trail - Intersection to Honey Hollow	0.7
Side Trail - to Forest City Parking	0.54
Side Trail - Double Bridges to Burrows Parking	0.14

- Side Trails
- Challenge Trail
- Catamount Trail
- Glades
- Parcels



Map Produced using GPS data from Peter Cottrell and Bill Hegman along with data from the CTA  
11/14/2022

VCGI, Chittenden County RPC, VCGI, Esri, HERE, Garmin, SafeGraph, Geotitles, Inc, METI/NASA, USGS, EPA, NPS, US